



OneGeology Newsletter

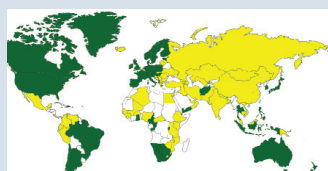
In this issue:

- Participation 1
- Twitter & blog 1
- Steering Group teleconference 1
- Training course—South Americas 2
- China prepares for OneGeology 2
- OMG 2
- IYPE Lisbon event; ESRI offer 2
- New WMS cookbook 3
- Forthcoming events 3
- 1G portal development 4
- Portal stats 4
- 1G website 5
- 1G kids 5
- Regional news 6
- 1G-E 6



Participation at February 2010

- Country participating in OneGeology
- National data being served



Participation at February 2010

There are currently 116 nations participating in OneGeology. The most recent countries to join are Uruguay and Cuba . We warmly welcome them and look forward to seeing their data in the Portal soon.

Twitter and blog

You can now follow OneGeology on Twitter twitter.com/OneGeology and we also have a blog from the coordinator of OneGeology, Ian Jackson. As well as synthesising the news in the 140 character “tweets” on Twitter, with more words available, Ian will take a wider view of developments and extend the commentary on OneGeology and related areas at: onegeology.blogspot.com/. Please log on and follow our very frequent news items on Twitter! You can get news on the items in this Newsletter as they happen—often on a daily basis. We welcome your feedback and we especially hope that the members



of YES (Young Earth Scientists) formed during IYPE, will become followers and give us lots of feedback and input on this new development for OneGeology. Looking forward to hearing from you!

Steering Group Teleconference – a summary

The Steering Group recently held a very successful teleconference in which they discussed a range of issues including progress on participation and data services. Two important issues discussed were the future status of OneGeology and the offer from ESRI.

The proposal for incorporating OneGeology as a not-for-profit legal entity with a separate fundraising foundation was discussed. It was agreed that the option of incorporating as a Company Limited by Guarantee in the UK was the most suitable, and legal advice will now be sought to take it forward, leading to a proposal to the Steering Group.

It was agreed that an offer made by the large GIS software company ESRI of a grant comprising one free ArcGIS seat along with maintenance and updates for a year and access to online training, should be accepted. It was agreed that this grant would be non-exclusive and open to all those geological surveys participating in OneGeology.

Full minutes of the teleconference are available at www.onegeology.org/meetings/steering_meetings.html. The next meeting of the OneGeology Steering Group will be held in Wellington, New Zealand on 15–16 April 2010.





OneGeology training course – South Americas

We are pleased to announce that the Spanish Agency for International Cooperation and Development (AECID) is supporting a OneGeology course named “Web dissemination of geological maps and geological information” in its annual training program. The training course will take place in Cartagena de Indias (Colombia) from 12–16 of April.

Funding for participants will be available and we hope that representatives from the South American geological surveys will attend.

OneGeology would like to thank AECID for offering this valuable resource and the Instituto Geológico y Minero de España (IGME) for all their hard work in arranging it. More details and how to apply will be available on the website soon.

China prepares for OneGeology!

On 21–22 October 2009 the Co-chairs of the OneGeology Technical Working Group, Tim Duffy of BGS and Jean-Jacques Serrano of BRGM visited the Chinese Geological Survey's Institute of Geology at the Chinese Academy of Geology Sciences (IOG, CAGS) in Beijing. There they worked with the creators of the digital 1:1 million geological map of the People's Republic of China – led by Ms Han Kunying – to prepare the data in suitable format and to prepare the Web Mapping Services. After intensive work the ground was prepared for both a Chinese language and English language service and the OneGeology community looks forward to seeing such a large part of the world being available in the portal under one geological classification scheme in 2010!



Colleagues at the IOG, CAGS look at the 1:1million digital geological map of China with OneGeology support staff.

Operational Management Group

The next meeting of the Operational Management Group is likely to be held in late August 2010 in Berlin, Germany. Please check the website for more information as it becomes available.

IYPE Planet Earth Lisbon Event 2009



OneGeology was presented and had an exhibition stand at the IYPE Planet Earth event (PEL2009) in Lisbon, Portugal on 20–22 November 2009. The event was held to highlight the main results of the IYPE and to launch new initiatives building on the IYPE legacy.

Dr Marko Komac, Director of the Geological Survey of Slovenia, presented the progress and future plans of OneGeology in the main event. OneGeology was also highlighted in many other presentations and is regarded as a very successful flagship project of the International Year of Planet Earth.



The PEL2009 brought together scientists, politicians and industrial leaders to celebrate the closing of the International Year of Planet Earth triennium (2007–2009), to evaluate the results of the IYPE and to look ahead. This forward look dominated the event and a new initiative, The Planet Earth Institute, looks likely to be built on the legacy of the International Year of Planet Earth.



ESRI offer

The GIS software company ESRI have offered OneGeology participants a grant comprising one copy of the ArcGIS system, along with maintenance and upgrades free for the first year and 50% discount for the second year, and access to online training. It has been agreed that this grant will be non-exclusive and open to all those geological surveys participating in OneGeology. Grantees will agree to publish and make their data available through the OneGeology infrastructure. Grants are made to institutions, not to individuals and one grant per country will be offered. Once the grant awarding process has been set up, the OneGeology secretariat will notify participants and provide further information on how to apply.





OneGeology cookbook 1: new updated version due soon

How to serve a OneGeology level 1 conformant WMS (Web Map Service).

Version 2 of this cookbook is currently out for final review with the Technical Working Group and should be available in February. This version of the cookbook represents a major revision of the previous release (1.1), reflecting lessons learned from a year of running the OneGeology helpdesk, and incorporating updates of software and standards. The cookbook will make you aware of any changes you will need to make to your service to ensure you can serve a version 1.3.0 WMS.

New web pages

The new cookbook will be released as a set of HTML pages incorporated into the OneGeology website www.onegeology.org

Using MapServer

The cookbook still centres on the use of MapServer (open source software), updated to version 5.6.0 with its full support for WMS version 1.3.0, to serve your map data, with full guidance to configure the software to create your web map service. We now include sections on how to run MapServer using IIS as the web server, how to compile MapServer to run on Linux, and sections on how to upgrade your existing mapserver installation to the new version.

Using ESRI

By popular demand the cookbook now also includes sections on configuring both ESRI ArcGIS server and ESRI ArcIMS (versions 9.3.1) to provide your map service.

Guidance on service and layer naming

This has been clarified, with examples, particularly with regards to buddied services (data served on behalf of other organisations) and for services showing regional or provincial map data.

ISO 19115 compliant metadata

We have updated our requirements for keywords and metadata for the service and data, and provide guidance to help you provide ISO 19115 compliant metadata.

Viewing data

Finally, we look at how the map data you make available through your WMS, can be used outside of the OneGeology portal by a number of popular desktop and browser based software clients, such as Gaia, ESRI ArcMap and Google Earth.

Exemplars

The new cookbook will be accompanied by two downloads of the BGS exemplar service data. One will contain just the data, intended for members who already have a service running or need to install on linux, and a second which will include the complete software and exemplar data already configured, intended to help first time installers get up and running quicker.

Forthcoming events

EGU – European Geosciences Union General Assembly 2010

Vienna, Austria, 2–7 May 2010

OneGeology-Europe has submitted 2 abstracts to the EGU conference. There will also hopefully be a 'fruits of IYPE' session in which OneGeology will feature as a keynote speech.

YES Network – OneGeology roundtable at EGU

We are also very pleased that the YES (Young Earth Scientist) Network are holding a roundtable

discussion session focussing on OneGeology and the importance of mapping in geosciences and the applications and models that they can apply to decision-making processes. Members of the OneGeology secretariat and management group will hopefully be able to attend what is shaping up to be a lively and enthusiastic debate.

EGU conference information:

meetings.copernicus.org/egu2010/

YES Network at the EGU:

www.networkyes.org/index.php/yes_egu2010

Please remember to keep the secretariat informed of forthcoming meetings and events in your region by emailing onegeology@bgs.ac.uk





OneGeology portal developments

More and more detailed map data is becoming available in the portal. There are now six more WFS (Web Feature Service) services live in the portal. These services provide geographically referenced and other attribute-based information and offer significantly more functionality. Nations currently serving WFS data include Sweden, France, Canada, Brazil, and Australia.

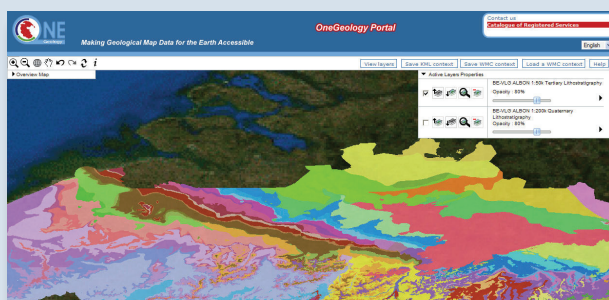
The British Geological Survey (BGS) has just released a trial version of 1:50k data for all the UK which can now be viewed on the portal, you need to zoom in to <1:70k to view it.

Continued portal development

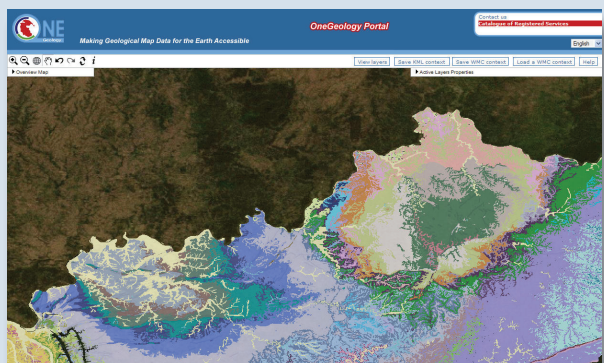
In conjunction with the OneGeology Technical Working Group, the OneGeology portal team at BRGM (Bureau de Recherches Géologiques et Minières) are currently working on a new catalogue to register the services. Initially there will be no visible difference, but this new catalogue will respect the OGC standard CS-W (catalogue service), and will allow, in the longer term, more improvements to the portal. We are also developing a better management of the scale limitation to accommodate the maps that are only visible at a fixed scale.

The latest services to be registered in the portal are:

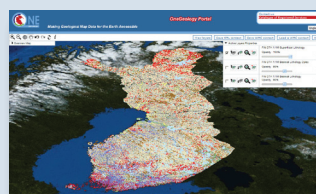
* **Flanders, Belgium:** 1:50k Tertiary Lithostratigraphy, BE-VLG ALBON 1:200k Quaternary Lithostratigraphy; Data provider: ALBON; Service Provider: DOV
dov.vlaanderen.be/dovweb/html/engels.html



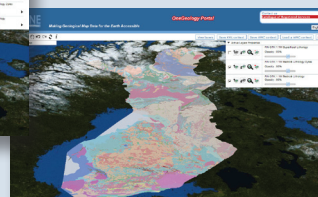
* **USA: Kentucky:** 1:500k; 1:24k Geology and Faults. Data/service provider : Kentucky Geological Survey



* **Finland:** 1:1M Bedrock and Superficial Lithology. Data/Service Provider GTK. www.geo.fi/en/



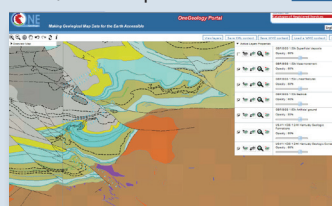
1:1M Bedrock Lithology



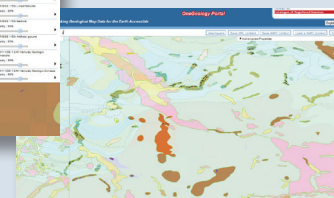
1:1M Superficial Lithology

* **United Kingdom:** 1:50 000 scale geology for the whole of the UK (superficial, bedrock, mass movement, artificial, linear features)

Data/service provider: BGS. www.bgs.ac.uk



1:50K bedrock



1:50K superficial

Portal statistics

portal.onegeology.org

Period: 2009/11/01 – 2010/01/30

Total visits to the portal website: 23000 visits

Where the majority of these visitors are directed from:

Direct link to portal.onegeology.org, within a website	9500 visits
www.onegeology.org or www.onegeology.com	4000 visits
www.google.com	273
www.wikipedia.org	185

Functions used (others than "add a layer")

Display of an external OGC server (not using the 1GG catalogue)	8000 visits
Display the catalogue view	400 visits
Load a WMC	100 visits

Which countries do the visitors come from:

UK	2776	18.71%
USA	2753	18.56%
China	2580	17.39%
France	1958	13.20%
Germany	1767	11.91%
Italy	988	6.66%
Spain	667	4.5%
Brazil	638	4.3%
Russia	506	3.35%
Others countries	less than 200	1.41%



The OneGeology website – getting better and better

The OneGeology website has under gone quite a few upgrades recently. The home page has been redesigned to include a monthly screen grab feature from the [OneGeology portal](#). If you have a particular piece of the portal you'd like to display, please [let us know](#).

We have recently joined [Blogger](#) and [Twitter](#), and Ian Jackson is keeping us up-to-date with OneGeology activities. Links are on the homepage.

The [participants section](#) of the website has been modified so that you can now view the members of the OneGeology project on a Google map and as KML. Also, you can see the flags of all the members involved and how the map of members has grown since the start of the project.

In the [organisation section](#), there is now a members' only area for the Steering Group. This is for work in progress and documentation prior to final release on the website. The technical sections of the website have been split into two; this makes it easier for the [general public](#) and [participants](#) to find the information they need.

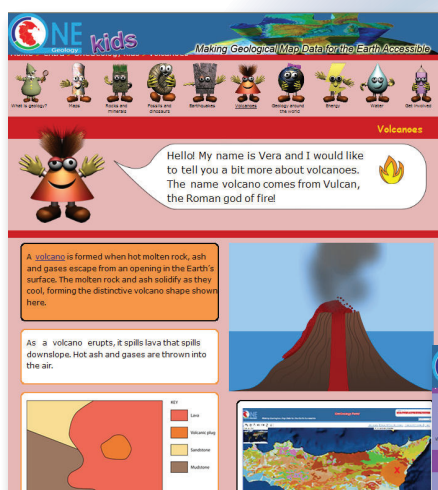
To be released shortly: the latest version of the OneGeology WMS cookbook (best practice manual) will be available under the technical detail for participants section, as a set of web pages.

The [meetings](#) pages for all of the OneGeology groups are updated frequently with current information about the project.



NEW! OneGeology Kids

The largest and most exciting recent update to the OneGeology website is the addition of [1GKids](#). This area of the website is a gentle and colourful introduction for children under 10, referencing how the [OneGeology portal](#) relates to different kinds of geology. We hope to provide translated versions of these pages in coming months.





In the future, we intend to create a new section of the website about [Geodiversity](#) and how use of the OneGeology portal can help in identifying geologically important areas for a wide range of users.

OneGeology-Europe



OneGeology-Europe recently went through its 12 month (half-way point) review by the EC and independent assessors. We can happily report that the project was successful and was given the green light! Project work is now focusing on the specification of terms—a

lithological vocabulary for the 1:1million scale data—and closely related work on the data model and systems. These will soon appear as a set of guidance and specifications so that all European surveys can serve their data in a consistent way. Work is also well underway on the design and preparation of a high quality book on the applications of geological data across Europe.

The OneGeology-Europe project will complete in September 2010 and thoughts are now turning towards how we make the most of the current established platform that the project has created and build on it with new projects.

Regional news

Europe

Poland—Dr Urszula Stępień made a presentation entitled “OneGeology—International integration of geological map data” at the Institute of Geology Seminar at Warsaw University on 12 January. Her presentation focused on OneGeology goals and discussed the issues of geological map data harmonization.

Serbia—Serbia has been working on its geological map data and hopes to serve its WMS to the OneGeology portal very soon.

Italy—On the 26 + 27 January 2010 OneGeology-Global and OneGeology-Europe representatives will be at the GIGAS workshop (GEOSS, INSPIRE, GMES, and SEIS) at the European Commission Joint Research Centre, Ispra, Italy. This GIGAS workshop, gives stakeholders of GEOSS, INSPIRE or GMES the

opportunity to gain insight into and influence the development of arrangements for interoperability within and between the initiatives. The aim is to achieve a common understanding of how to perform a concerted adoption of activities to influence and shape the evolution of GEOSS, INSPIRE, and GMES towards convergence. This will be discussed on both the strategic and technical levels.

More information can be found at:

www.thegigasforum.eu/workshops/shaping-2010/introduction.html/

Asia

Mongolia have formally requested the Geological Survey of Japan to assist as a Onegeology ‘buddy’ and serve map data on their behalf for OneGeology. The Mongolia geological map is now complete and both organisations are working together to create a WMS service for OneGeology.

OneGeology and GEO

In a previous Newsletter, we told you about OneGeology becoming a contributing Sub-task within the inter-governmental Group on Earth Observations (GEO). To inform the GEO community about OneGeology, we wrote an article for the GEO Newsletter in October 2009 http://www.earthobservations.org/art_005_006.shtml. Continuing this process, here is an update on GEO. The Member States and Participating Organisations held the 6th GEO Plenary in Washington in November 2009. OneGeology was included in the Secretariat Director’s 2009 highlight report and was also one of the initiatives picked out for special mention by Participating Organisation

EuroGeoSurveys, in their opening comments. One of the Plenary’s decisions was to admit the International Union of Geological Sciences as a new Participating Organisation, further strengthening the presence of the geological sciences within GEO. OneGeology has been registering coverages in GEO’s Common Infrastructure (including the GEO Registry, Clearinghouse and Portal) and this was demonstrated during the parallel GEO Exhibition. The raised profile that this has created has resulted in OneGeology being nominated by the GEO Architecture and Data Committee as a candidate for a Showcase presentation at the forthcoming GEO Ministerial, to be held in Beijing in November 2010; a great opportunity to demonstrate our progress in a high level forum.

Published by the OneGeology secretariat. If you have any articles or images you would like us to include in the next edition of the OneGeology newsletter, please contact the Secretariat at onegeology@bgs.ac.uk. Further Information on the OneGeology initiative can be found on the website, www.onegeology.org which is regularly updated.

Contact us at onegeology@bgs.ac.uk

Enter the OneGeology Portal at portal.onegeology.org

www.onegeology.org

